

Watling Street, Radlett

£295,000 (Leasehold)

VILLAGE
E S T A T E S



An opportunity to purchase this one bedroom first floor retirement flat situated in the centre of Radlett village giving easy access to the shops, bus and train services, library and other local amenities.

The apartment is in a well organised warden assisted development and comprises of one double bedroom, bathroom, lounge/dining room and kitchen and has the benefit of a south facing Juliette balcony.

Service charges are approx. £5,430 per annum and 91 years remaining on the lease.

01923 852434
www.village-estates.co.uk



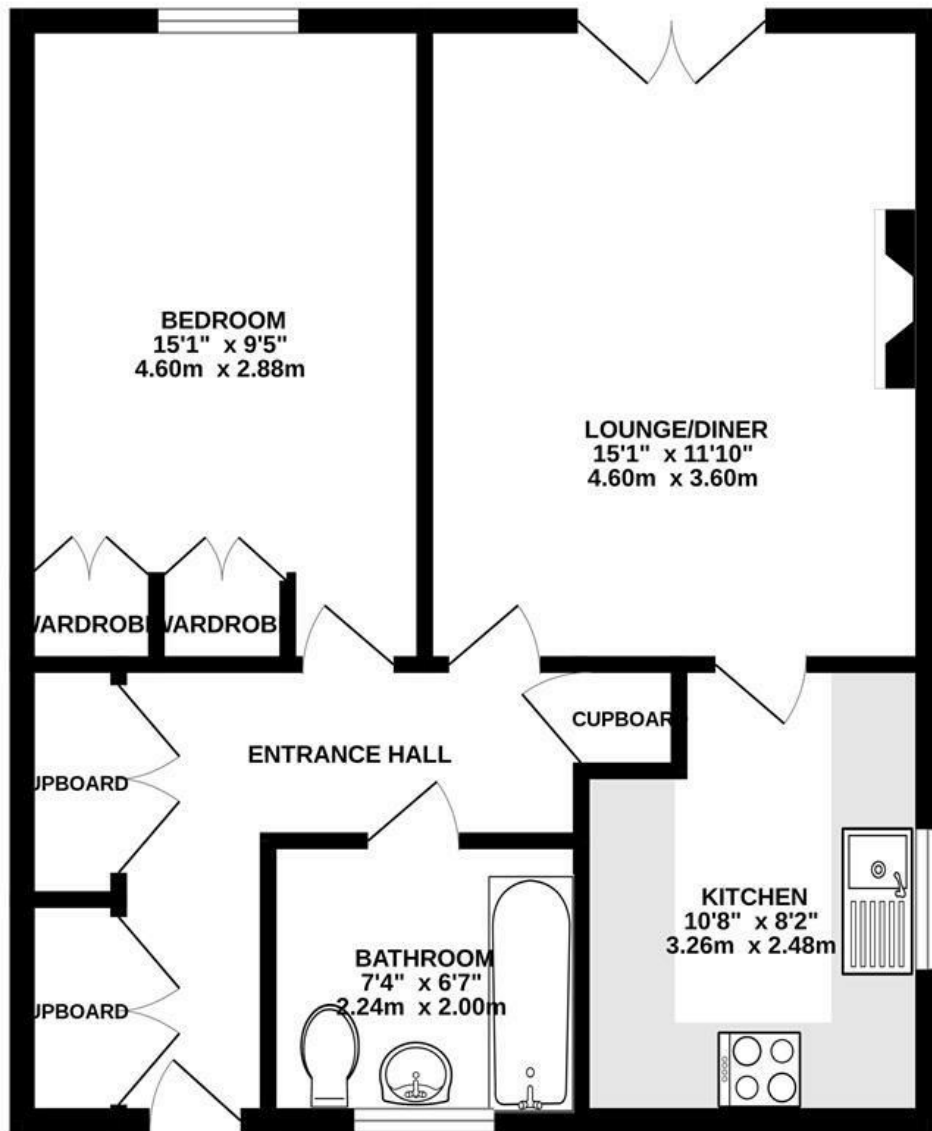
Village Estates
70d Watling Street, Radlett
Herts WD7 7NP

Important Note: These particulars do not form part of any contract. All measurements are approximate and should not be relied upon. All prices quoted are strictly subject to contract.





544 sq.ft. (50.6 sq.m.) approx.



Available on the
App Store



ANDROID APP ON
Google play

Energy Efficiency Rating		
	Current	Potential
<i>Very energy efficient - lower running costs</i>		
(92 plus) A		
(81-91) B	82	82
(69-80) C		
(55-68) D		
(39-54) E		
(21-38) F		
(1-20) G		
<i>Not energy efficient - higher running costs</i>		
England & Wales	EU Directive 2002/91/EC 